

NLW

Chair type whole body counter (model: NLW) is designed for personal in-vivo measurement. It can detect radioactive nuclide deposited inside of the body. Detector for thyroid radioactivity count can be added optionally. Amount of radioactivity intake and committed effective dose can be calculated by accessory PC software.

FEATURES

- High detection sensitivity
 - * 150Bq (^{60}Co , 1 minute measurement)
 - * Two large NaI(Tl) scintillation detectors are used
 - * Steel or lead shielding around the detectors and monitor body
- Measured person can be relaxed during measurement on the chair
- Easy operation
 - * Color LCD touch screen which is easy to see
 - * PC software for easy operation for nuclide identification, dose calculation, data search
- Easy maintenance
 - * user-friendly software for easy operation for energy calibration and efficiency calibration
- Display language selectable

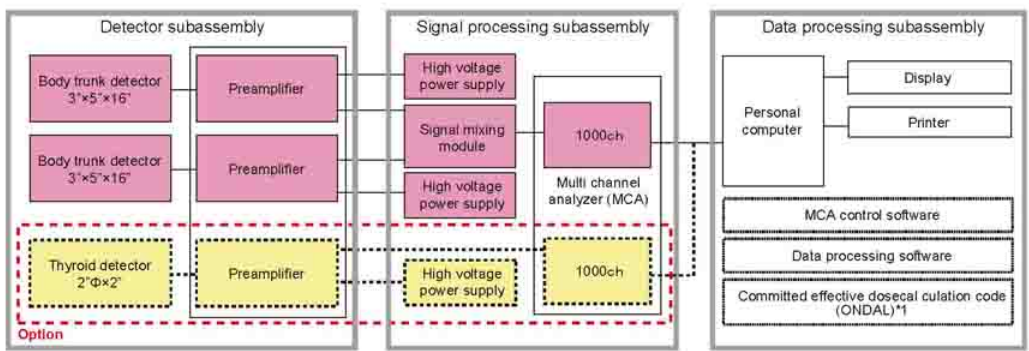
Chair Type Whole Body Counter



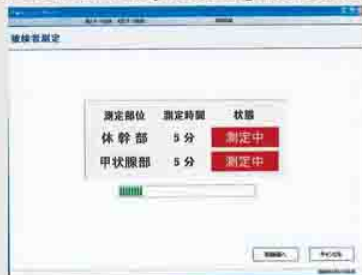
SPECIFICATIONS

Radiation Detected	: Gamma rays
Detector	: 3 × 5 × 16 inches NaI(Tl) scintillation detectors (two detectors)
Detector Position	: Measure from back of the measured person
Shielding Material	: Steel or Lead
Detection Sensitivity	: Less than 150 Bq (⁶⁰ Co energy range, 1 minute measurement, background dose rate: less than 0.1 μSv/h)
Energy Range	: 100 ~ 2000 keV
Display	: 10.4 inches color LCD (status indication for measured person)
Number of channels of multi channel analyzer (MCA)	: More than 1000 channels
Throughput	: 30 to 50 persons/h (1 minute measurement)
Size	: 1500 (W) × 1500 (H) × 1500 (W) mm approx.
Mass	: Main body: Less than 3000 kg Thyroid detector (optional): Less than 100 kg Additional shielding (optional): Less than 1000 kg
Operating Temperature	: 0 to 40°C
Operating Humidity	: Less than 80% (no-condensing)
Power Supply	: 100 to 240 V AC 50/60Hz
Option	: Thyroid detector (detector, pre amplifier, high voltage power supply and MCA) Additional shielding

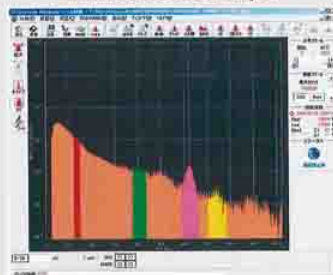
Measurement system



LCD screen example during measurement



MCA screen example



Dose calculation screen example



*1: Developed by National Institute of Radiological Sciences. Its permission is needed to be used.

CAUTION

*Read the instruction manual provided before using this product, to make sure you operate it safely.

Fuji Electric Systems Co., Ltd.

Headquarters

Sales Group, International Sales Div.
Gate City Ohsaki, East Tower, 11-2, Osaki 1-chome, Shinagawa-ku, Tokyo 141-0032, Japan
Phone: +81-3-5435-7275, FAX: +81-3-5435-7437